

A.V.Microtech

Address :-

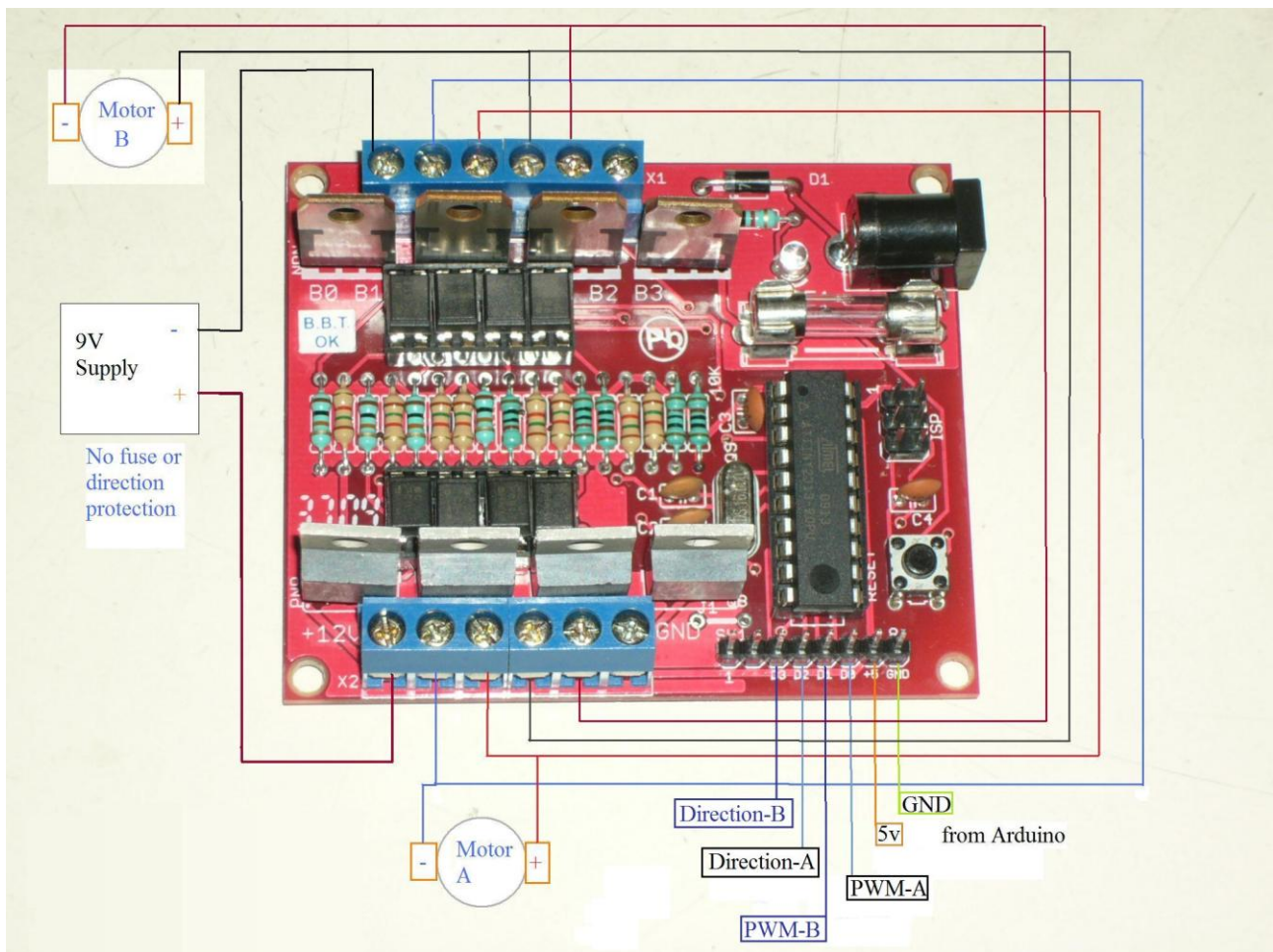
Office:- 424D pocket-2 Mayur Vihar Phase-1, New Delhi 110091

Factory:- Sector 63 Noida

Specification

1. With Attiny2313 as the controller.
2. With optoisolator to separate control circuit from driver circuit.
3. The attiny2313 voltage can be 3.3V or 5V.
4. The high current drive circuit can be 3V to 24V.
5. Tip122 and Tip127 as diver Transistors.
6. Upto 1A drive current.
7. The Attiny2313 can be re-programmed for other applications.
8. TTL serial and SPI communication port of Attiny2313 available with header pins

Connection Diagram



Technical Details

This intelligent board does high speed processing (16Mhz crystal) and reduces the number of I/O and processing overhead otherwise required by the main CPU (AVR or PIC).

Free from latching and resets, this board offers the highest immunity to electrical noise. This board can support low voltage motors from Tamiya.

It can work as standalone fully functional Robot controller. Like line tracing, obstacle avoidance, light following robot or bluetooth controlled robot.

You may need a suitable programmer to configure this board for other application. We however adjust the fuse bits to external oscillator (16Mhz crystal). Hence you can use low cost programmer.

Main Components 1X ATTINY2313, 4X Tip 122, 4X Tip 127 and 8X sharp PC817 or equivalent optoisolator.

Schematic Diagram

